

INSTRUCTION SHEET

Buell
AMERICAN MOTORCYCLES

-J00993

Kit Numbers 91280-96Y, 91281-96Y, 91282-96Y

REV. 8-25-97

S1 BALLISTIC FABRIC LUGGAGE SYSTEM SET

General

The Ballistic Fabric Luggage System is designed to fit all S1 and S1 Twintail models.

NOTE

Before beginning initial installation and each time you reinstall your Ballistic Fabric Luggage System, wash your motorcycle and apply several coats of a high quality wax on the body work.

91282-96Y Kit contains:

QTY	DESCRIPTION	PART NO.
1	Tail Bag	Not sold separately
1	Mount Clip	91288-96Y
1	Shoulder Strap	61509-97Y
1	Rain Cover	91290-96Y

91281-96Y Kit contains:

QTY	DESCRIPTION	PART NO.
1	Saddlebag RH	91291-96Y
1	Saddlebag LH	91286-96Y
2	Rain Cover	91289-96Y
2	Mount Bracket	91287-96Y
2	1/4-20 x 5/8 Screw	6355Y
2	Reflector	59263-79

91280-96Y Kit contains all of the above.

Installation of saddlebag mount brackets

1. Loosen and remove rear turn indicator mount screws and lock nut. Retain lock nuts.
2. Using supplied 1/4-20 x 5/8 bolts, reinstall rear turn indicators by passing the bolt through the turn indicator, tail bracket and saddlebag mount bracket. The "L" bracket should be mounted facing away from the motorcycle.
3. Tighten the lock nut to a snug fit.

CAUTION

Do not over tighten lock nut. Over tightening will cause damage to the turn indicator mount. This damage could cause in the mount to fail.

Installation of saddlebags

NOTE

Make sure the inside surfaces of the bags and the body work are clean and dirt free before mounting bags.

1. For Domestic United States usage ONLY. Install supplied reflectors to the mounting patch on the right and left saddlebags. Insure the mount patch is clean and free of dirt, dust and oils, peel protective tape, align and press firmly against a flat surface.

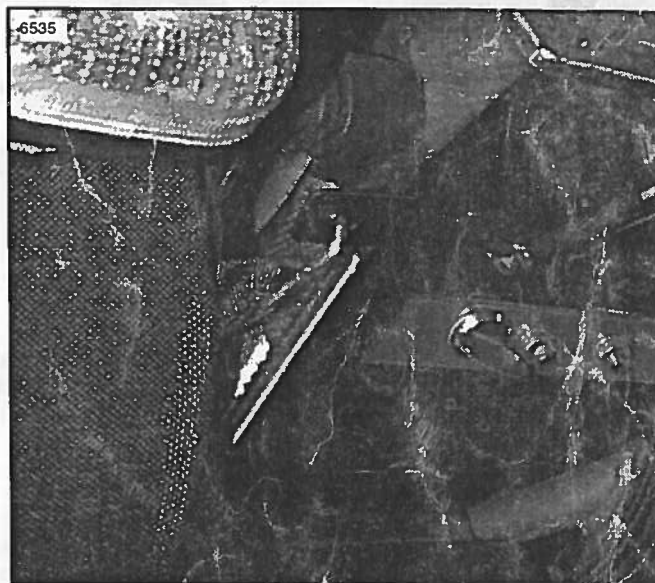


Figure 1. "S" hook shown in rear mount bracket hole

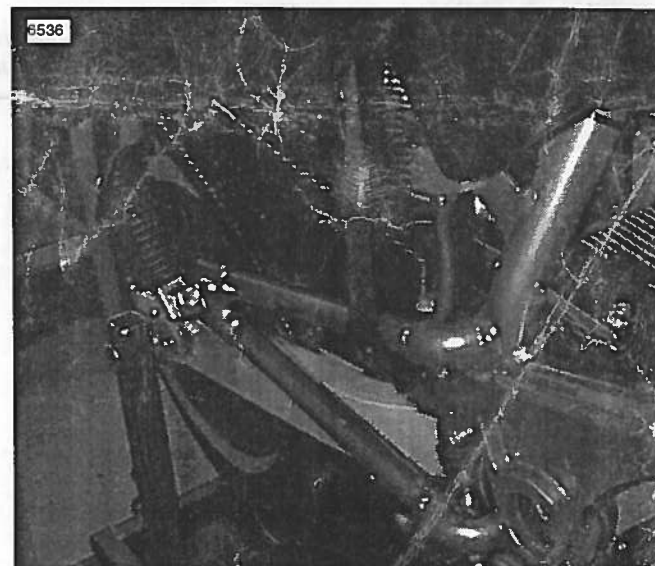


Figure 2. Front strap of left saddlebag

2. Make sure the yoke is fastened so that all of the hook and loop are caught complete. For the S1 Twintail, fasten the hook and loop to approximately 2/3 of the fastening area.
3. Place bags over seat.
4. See Figure 1. Put the rear "S" hooks through the rear mount bracket hole.
5. See Figure 2. Take the front strap of the left saddle bag and loop around the frame where the rear footpeg mount tube attaches to the main frame. Complete strap loop through the strap clip. Do not pull tight at this time.

6. See Figure 3. Take the front strap of the right saddlebag and loop around the rear footpeg mount tube twice. Complete strap loop through the strap clip.
7. Insure the saddlebags are centered and pull right and left straps for a snug fit.

Installation of Tail Bag with saddlebags

1. Pull the mounting straps from the cutaways on the top of the saddlebags.
2. Place the Tail bag on the rear section of the seat and fasten the four buckles. Pull straps so they are snug.
3. Tuck excess webbing back into the cutaways on the saddlebags.

Installation of Tail Bag without saddlebags

1. Remove Seat.
2. Place the grommet of the Tail bag mounting harness over the seat retaining the bolt so that the longer straps are to the rear of the motorcycle. Allow the straps to drape over the sides.
3. Replace the seat and tighten retaining bolt.
4. Place the Tail bag on the rear seat and fasten all four buckles. Tighten by pulling on the straps, tuck excess webbing under the Tail bag.

NOTE

It is not recommended to ride with the Tail bag removed and the mount harness installed. The straps and buckles could cause damage to your body work!.

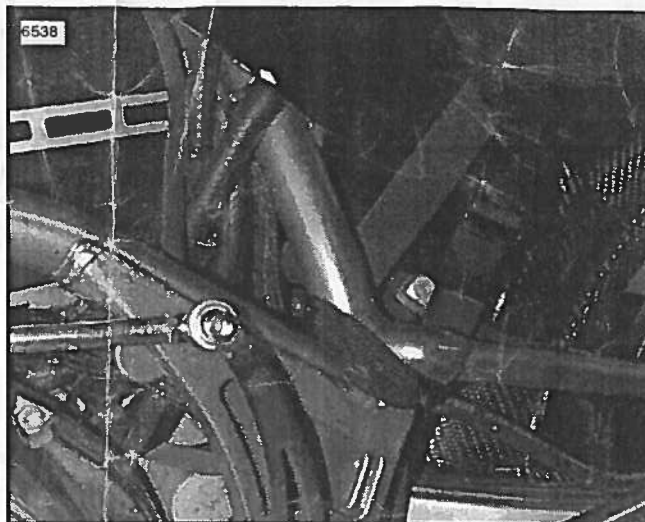


Figure 3. Right saddlebag front strap