

## GENERAL

See [Figure 2-63](#). The front fork consists of two telescoping outer tube/inner slider assemblies. Each assembly has an internal compression spring which supports the forward weight of the vehicle and rider.

The compression spring extends and retracts to cushion the ride over rough or irregular road surfaces. An oil filled damping mechanism controls the telescoping action of each tube/slider assembly.

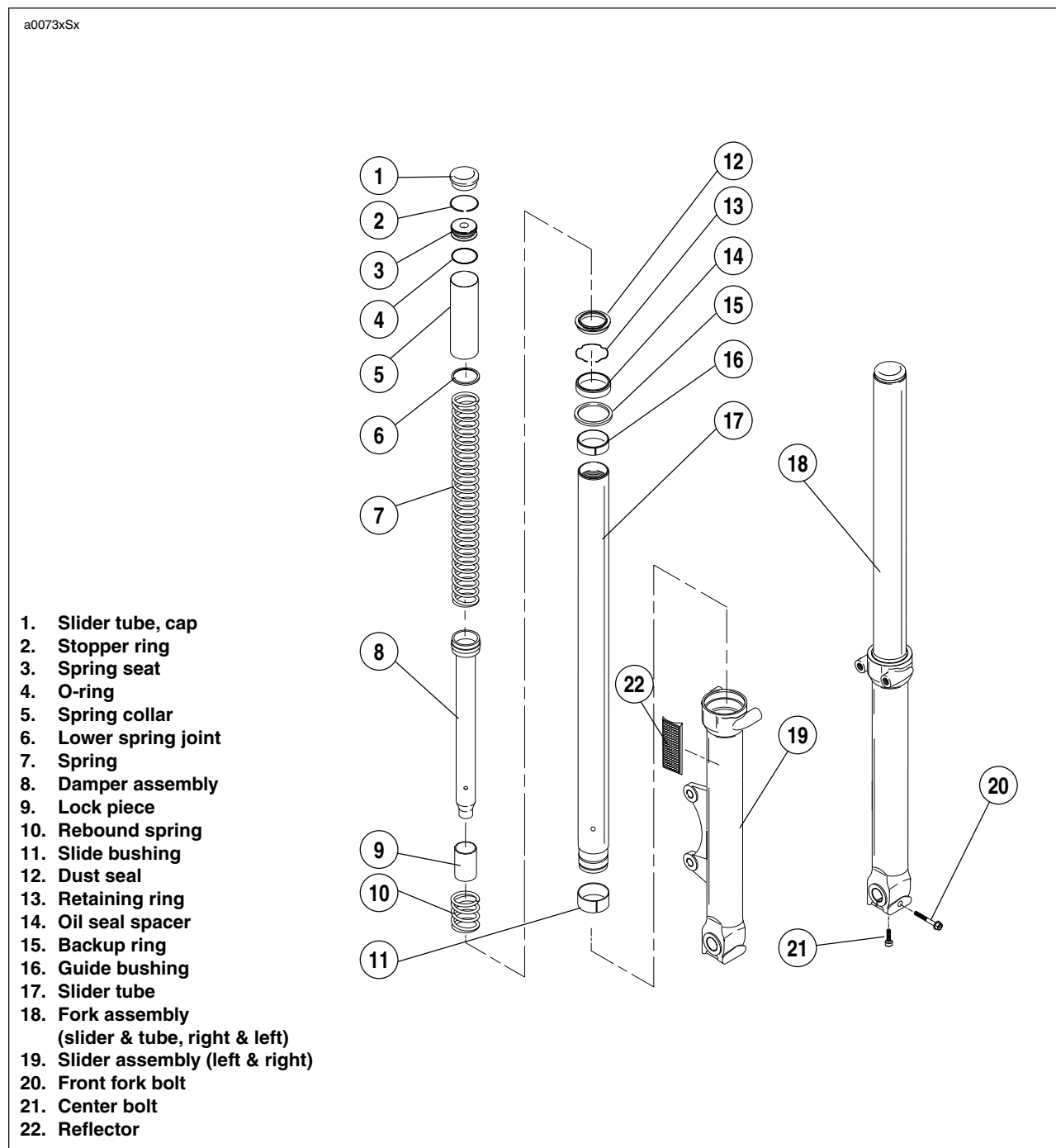
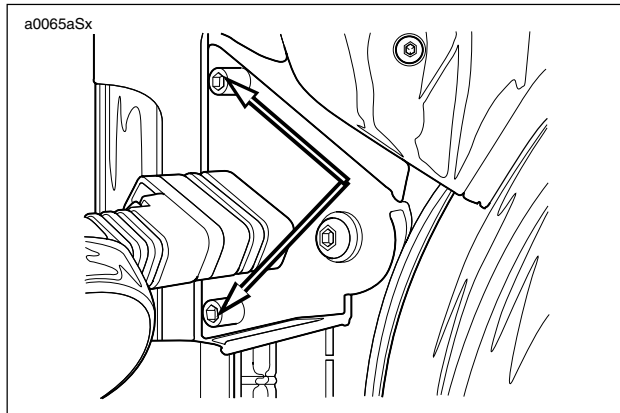


Figure 2-63. Front Fork Assembly

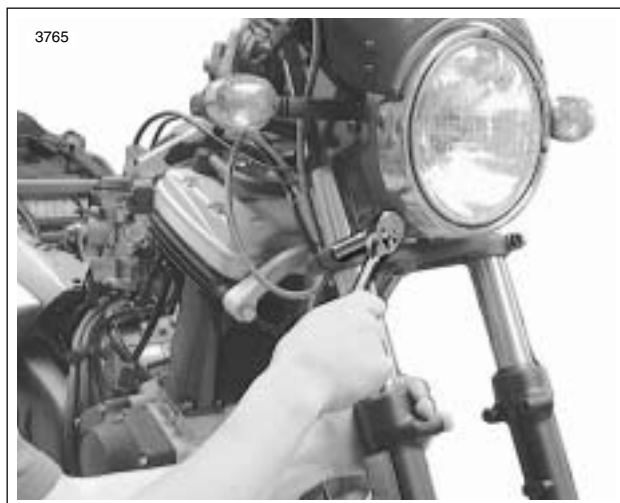
## REMOVAL

1. Raise front wheel off floor.
2. Detach front brake caliper from rotor. See [2.11 FRONT BRAKE CALIPER](#).
3. Remove front wheel. See [2.5 FRONT WHEEL](#).
4. Remove front fender. See [2.23 FENDERS](#).



**Figure 2-64. Headlamp Bracket Screws**

5. See [Figure 2-64](#). Loosen headlamp bracket screws.



**Figure 2-65. Upper and Lower Triple Clamp Pinch Screws**

6. See [Figure 2-65](#). Loosen the large pinch screws on both the upper and lower triple clamps.



**Figure 2-66. Front Fork Removal**

7. See [Figure 2-66](#). Remove front fork. Repeat procedure for the other front fork.

## DISASSEMBLY

1. Remove front forks.



**Figure 2-67. Clamping the Fork**

2. See [Figure 2-67](#). Clamp the fork in a vise with front fork holding tool (Part No. B-41177).



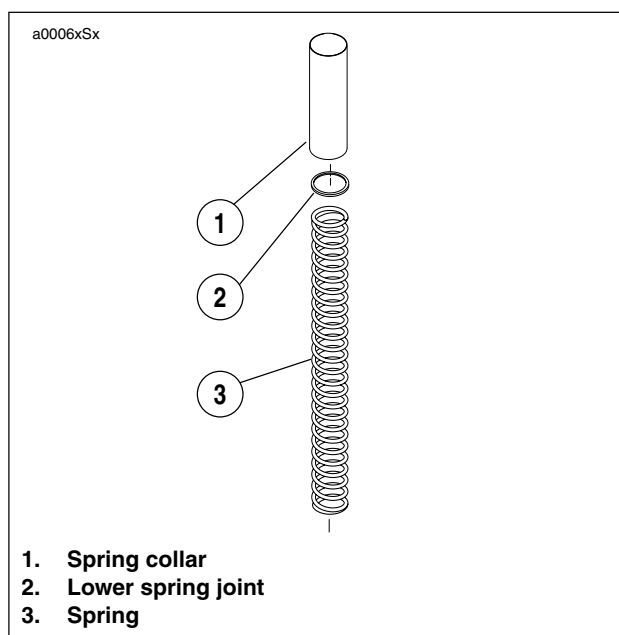
**Figure 2-68. Slider Tube Cap**

3. See [Figure 2-68](#). Remove slider tube cap.



**Figure 2-69. Spring Seat**

4. See [Figure 2-69](#). Push down on the spring seat (o-ring included) and remove the stopper ring and spring seat.



**Figure 2-70. Removing Sub-Assembly**

5. See [Figure 2-70](#). Remove the spring collar, lower spring joint and spring from slider tube.



**Figure 2-71. Pumping Fork Oil**

6. See [Figure 2-71](#). Remove the fork oil by pumping the fork leg and tube 8-10 times until the tube moves freely.



**Figure 2-72. Removing Center Bolt**

7. See [Figure 2-72](#). Remove the center bolt (metric) from the bottom of the fork tube.



**Figure 2-73. Removing Damper**

8. See [Figure 2-73](#). Remove the damper assembly, lock piece and the rebound spring from the slider tube.

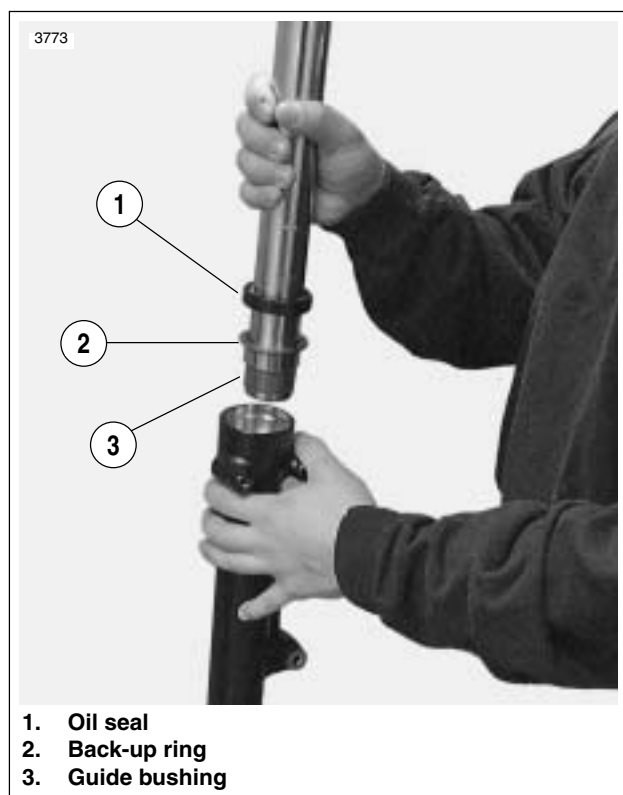
**CAUTION**

Do not to scratch the slider tube or the slider assembly. Scratched tubes may leak fork oil and then must be replaced.



**Figure 2-74. Removing Dust Seal**

9. See [Figure 2-74](#). Remove the dust seal and the retaining ring from the slider assembly and the slider tube.



**Figure 2-75. Removing Slider Tube**

10. See [Figure 2-75](#). Pull the slider tube out of the slider assembly. Remove oil seal, back-up ring and guide bushing.

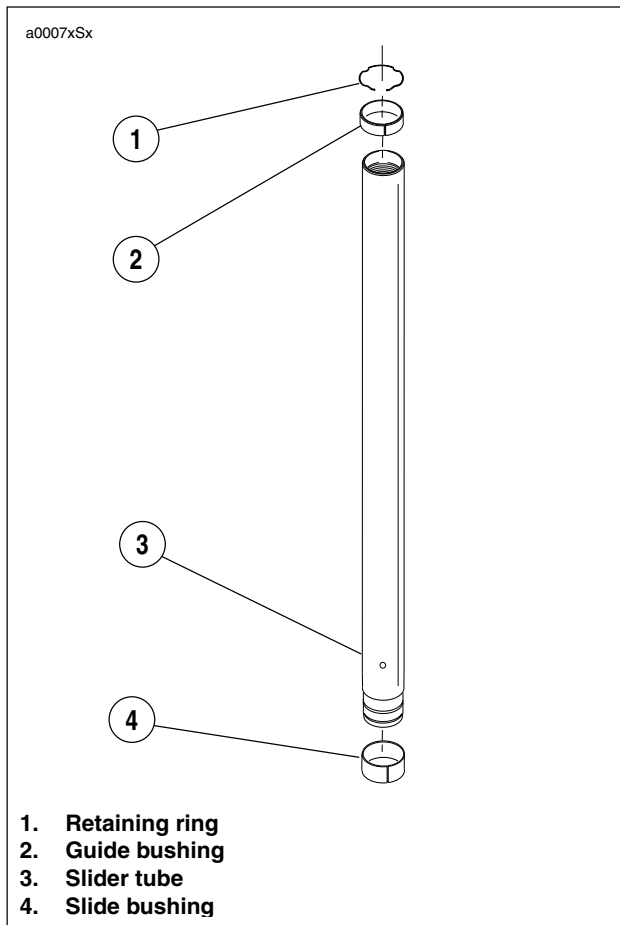


**Figure 2-76. Removing Slide Bushing**

11. See [Figure 2-76](#). Remove the slide bushing by prying the slide bushing at the split.

## CLEANING AND INSPECTION

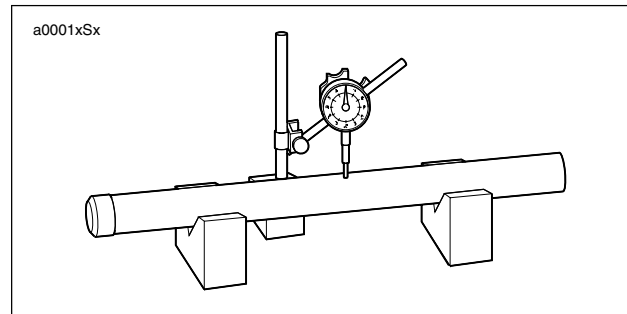
1. Thoroughly clean and inspect all parts. Replace any parts that are bent, broken or damaged.



**Figure 2-77. Slider Tube Components**

2. See [Figure 2-77](#). Check the slider tube for score marks, scratches and excessive or abnormal wear. Replace if worn or damaged.

3. Check the slide bushing and the guide bushing for excessive wear or scratches. Replace if damaged or worn.
4. Replace the retaining ring if distorted.
5. Measure spring free length. Replace springs shorter than service wear limit of 12.8 in. (325 mm).
6. Measure rebound spring free length. Replace springs shorter than service wear limit of 0.69 in. (17.4 mm).



**Figure 2-78. Slider Tube Runout**

7. See [Figure 2-78](#). Measure slider tube runout. Replace slider tube if runout exceeds the service wear limit of 0.008 in. (0.2 mm).

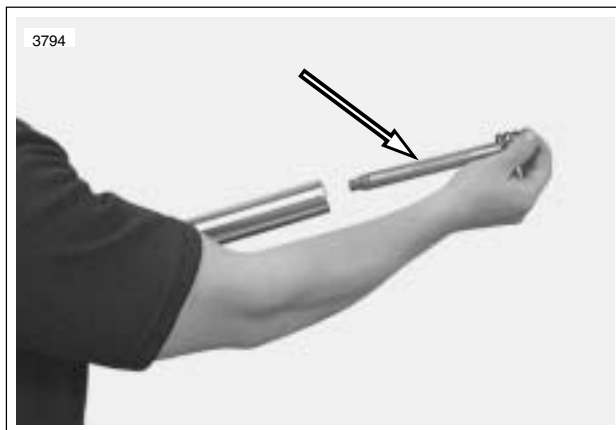
## ASSEMBLY

1. Coat the slide bushing with fork oil or sealing grease.



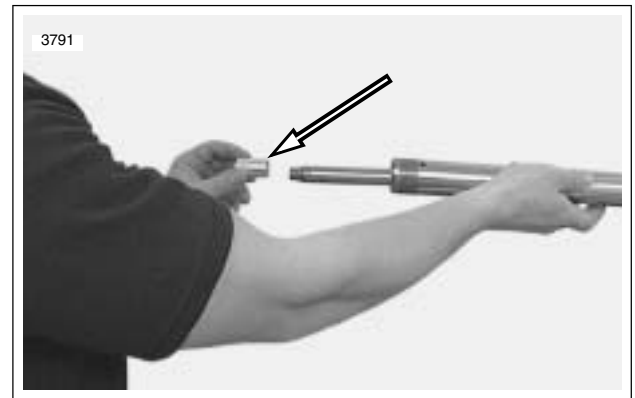
**Figure 2-79. Install Slide Bushing**

2. See [Figure 2-79](#). Install slide bushing onto the slider tube.



**Figure 2-80. Damper Assembly**

3. See [Figure 2-80](#). Install damper assembly and rebound spring into slider tube.



**Figure 2-81. Lock Piece**

4. See [Figure 2-81](#). Install lock piece into damper.



**Figure 2-82. Clamping the Slider Assembly**

5. See [Figure 2-82](#). Clamp the slider assembly in a vise with front fork holding tool (Part No. B-41177).

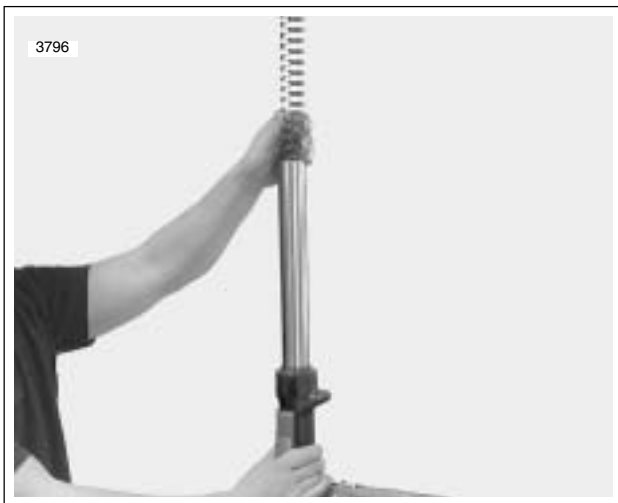


**Figure 2-83. Installing Slider Tube**

6. See [Figure 2-83](#). Install slider tube into slider assembly.

**CAUTION**

The slider assembly can move freely up and down on the slider tube. Always hold both the slider tube and slider assembly to prevent damage to bushings and seals.



**Figure 2-84. Install Rebound Spring**

7. See [Figure 2-84](#). Install spring onto damper assembly.



**Figure 2-85. Install Center Bolt**

8. See [Figure 2-85](#). Install center bolt and washer.  
9. Coat the guide bushing with fork oil or sealing grease.



**Figure 2-86. Install Guide Bushing**

10. See [Figure 2-86](#). Install guide bushing onto the slider tube.





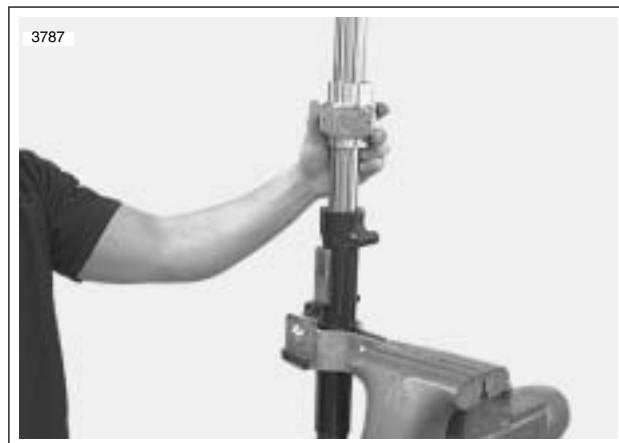
**Figure 2-87. Slider Tube Protection**

11. See [Figure 2-87](#). Wrap the end of the slide pipe and the slide bushing channel with tape to avoid damaging the oil seal lip when installing.
12. Coat dust seal, oil seal spacer, and backup ring with fork oil or sealing grease.



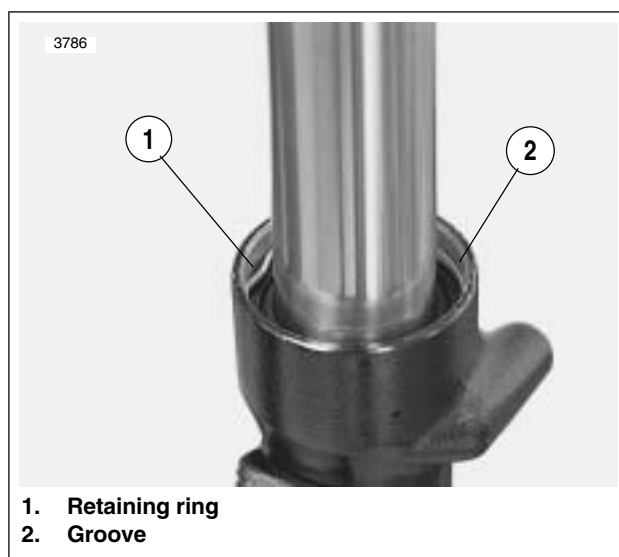
**Figure 2-88. Oil Seal and Backup Ring**

13. See [Figure 2-88](#). Install oil seal spacer and backup ring.



**Figure 2-89. Fork Seal Driver**

14. See [Figure 2-89](#). Using FORK SEAL DRIVER (Part No. B-43991), drive the guide bushing with the oil seal spacer and oil seal into position in the slider assembly.



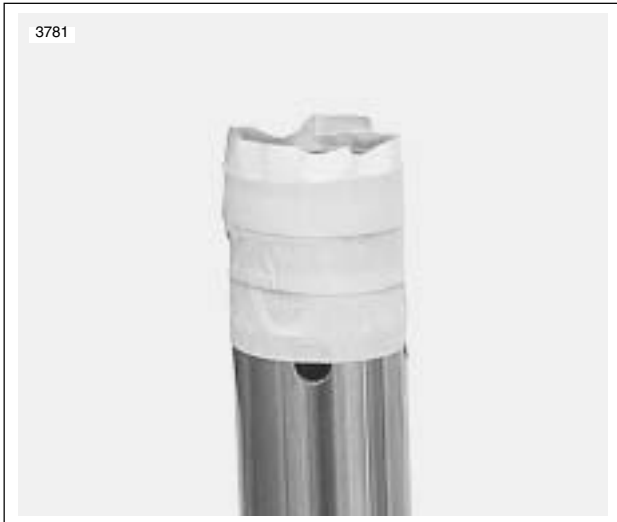
**Figure 2-90. Install New Retaining Ring**

15. See [Figure 2-90](#). Install retaining ring. Verify ring is installed securely in the groove inside slider assembly.



**Figure 2-91. Install New Dust Seal**

16. See [Figure 2-91](#). Install **new** dust seal onto slide pipe.



**Figure 2-92. Remove Slider Tube Protection**

17. See [Figure 2-92](#). Remove the tape from the slider tube end.

**NOTE**

*The recommended fork oil is hydraulic fork oil type "E".*

18. Pour 9.2 oz. (272 ml) fork oil into fork.
19. Install lower spring joint and spring collar.
20. Coat a **new** o-ring with fork oil or sealing grease.
21. Install **new** o-ring onto spring seat.



**Figure 2-93. Compressing Spring Seat to Install Stopper Ring**

22. See [Figure 2-93](#). Push down on spring seat past groove to install stopper ring. Stopper ring will lock into groove when installed correctly.

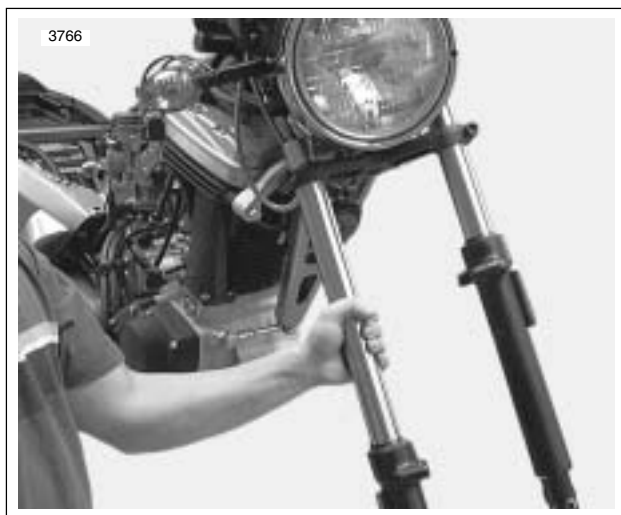


**Figure 2-94. Slider Tube Cap**

23. See [Figure 2-94](#). Install slider tube cap.
24. See [Figure 2-95](#). Install fork assemblies through upper and lower triple clamps.

## INSTALLATION

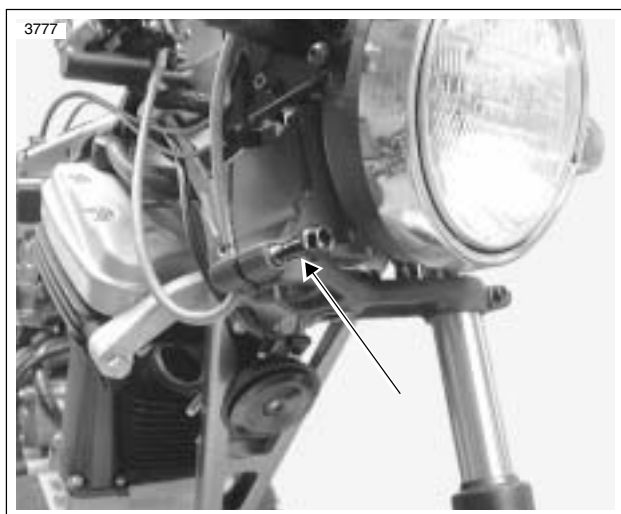
1. See [Figure 2-95](#). Install fork assemblies through upper and lower triple clamps.



**Figure 2-95. Installing Fork Assemblies**

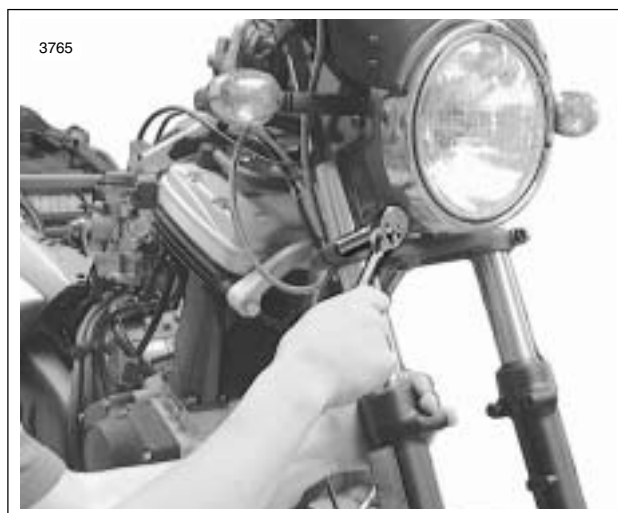
### NOTE

When installing the front forks, use a screwdriver to pry apart the triple clamps.



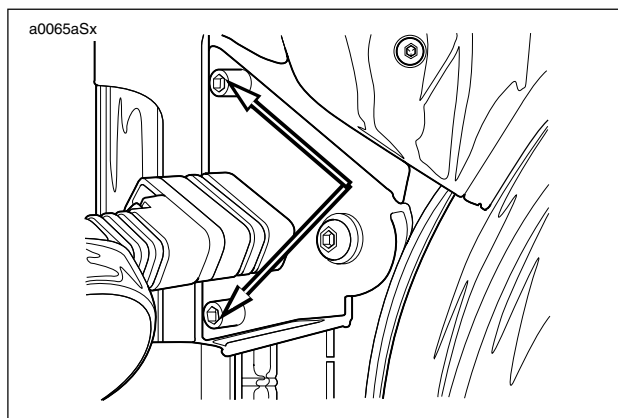
**Figure 2-96. Location of Anti-Seize on Triple Clamp Pinch Screws**

2. See [Figure 2-96](#). Apply LOCTITE ANTI-SEIZE to the threads of triple clamp pinch screws.



**Figure 2-97. Upper and Lower Triple Clamp Pinch Screws**

3. See [Figure 2-97](#). Align and secure fork assemblies.
  - a. Position fork assemblies so that top of each slider tube is flush with the top surface of upper triple clamp. Be sure that top surface of fork is not below top surface of upper triple clamp.
  - b. Tighten upper triple clamp pinch screws (at sliders) to 13-16 ft-lbs (18-22 Nm).
  - c. Tighten lower triple clamp pinch screws to 22-29 ft-lbs (30-39 Nm).
  - d. See [Figure 2-98](#). Tighten headlamp brackets flush against bottom of top triple clamp.



**Figure 2-98. Tighten Headlamp Bracket Screws**

4. Install front fender. See [2.23 FENDERS](#).
5. Install front wheel. See [2.5 FRONT WHEEL](#).
6. Install front brake caliper. See [2.11 FRONT BRAKE CALIPER](#).
7. Align headlamp. See [1.23 HEADLAMP](#).

## REMOVAL/DISASSEMBLY

1. Remove seat. See [2.28 SEAT](#).

**⚠ WARNING**

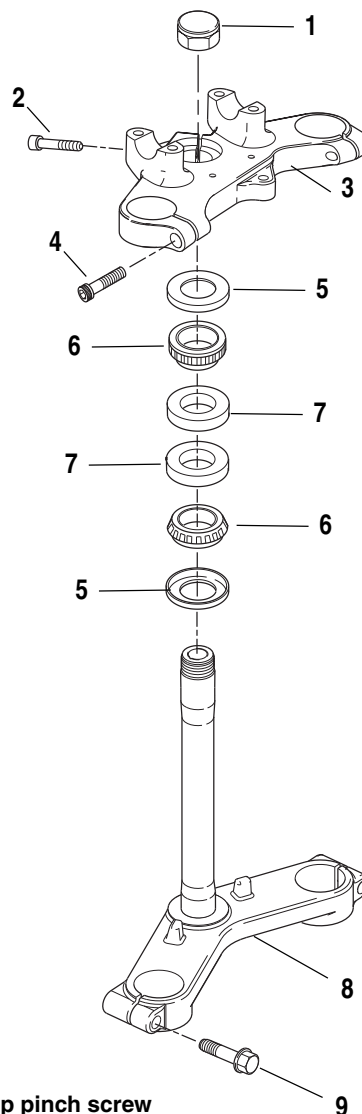
To prevent accidental vehicle start-up, which could cause death or serious injury, disconnect negative (-) battery cable before proceeding. (00048a)

2. Disconnect battery.
3. Remove dash. See [2.27 INSTRUMENT PANEL](#).
4. Remove handlebars. See [2.30 HANDLEBARS](#).
5. Remove fork assembly. See [2.17 FRONT FORK](#).
6. Remove ignition switch assembly. See [7.6 IGNITION/ HEADLAMP KEY SWITCH](#).
7. See [Figure 2-99](#). Remove screw (2) and capnut (1).
8. Support lower triple clamp (8) and remove upper triple clamp (3).
9. Remove upper dust shield (5) and upper bearing (6).
10. Lower triple clamp can be removed.
11. Remove lower bearing (6) and lower dust shield (5) from lower triple clamp.

## CLEANING AND INSPECTION

1. See [Figure 2-99](#). Clean the dust shields (5), bearing cups (7), fork stem and lower triple clamp (8) and frame with solvent.
2. Carefully inspect bearing races and assemblies for pitting, scoring, wear and other damage. Replace damaged bearings (6) as a set (5, 6 and 7).
3. Check the fork stem and lower triple clamp (8) for damage. Replace if necessary.

a0137x2x



1. Capnut
2. Center cap pinch screw
3. Upper triple clamp
4. Pinch screws (2)
5. Dust shield (2)
6. Bearing (2)
7. Bearing cup (2)
8. Lower triple clamp
9. Pinch screws (2)

Figure 2-99. Fork Stem and Bracket Assembly

## ASSEMBLY/INSTALLATION

---

1. If removed, install **new** bearing cups into frame steering head using STEERING HEAD BEARING RACE INSTALLER (Part No. HD-39302).
2. See [Figure 2-99](#). Liberally coat the bearings (6) with grease using WHEEL BEARING PACKER TOOL (Part No. HD-33067). Work the grease into the rollers.
3. Install lower bearing:
  - a. Place lower bearing dust shield (5) over fork stem.
  - b. Find a section of pipe having an inside diameter slightly larger than the outside diameter of the fork stem.
  - c. Press bearing (6) with small end up onto fork stem and lower triple clamp (8). Use the pipe as a press-on tool.
4. Insert lower triple clamp (8) through the steering head. Install the upper bearing (6) with small end down and dust shield (5) onto fork stem.
5. Apply LOCTITE 243 (Blue) to fork stem. Loosely install upper triple clamp (3) using cap nut (1).
6. Install fork assemblies. See [2.17 FRONT FORK](#).
7. Tighten cap nut (1) until the bearings have no free play. Make sure the fork stem turns freely.
8. Check steering head bearing adjustment. See [1.16 STEERING HEAD BEARINGS](#).
9. Install handlebars. See [2.30 HANDLEBARS](#).
10. Install dash. See [2.27 INSTRUMENT PANEL](#).
11. Connect battery negative cable.
12. Install seat. See [2.28 SEAT](#).

### WARNING

**After installing seat, pull upward on front of seat to be sure it is in locked position. While riding, a loose seat can shift causing loss of control, which could result in death or serious injury. (00070a)**

## REMOVAL

1. Remove seat. See [2.28 SEAT](#).
2. Remove battery. See [7.16 BATTERY](#).

### ⚠ WARNING

**Disconnect negative (-) battery cable first. If positive (+) cable should contact ground with negative (-) cable connected, the resulting sparks can cause a battery explosion, which could result in death or serious injury. (00049a)**

3. Remove right side footpeg support bracket. See [2.21 FOOTPEGS AND FOOTPEG SUPPORT BRACKETS](#).
4. Remove three bolts holding front sprocket cover. See [2.22 SPROCKET COVER](#).
5. Remove inner fender. See [2.23 FENDERS](#).
6. Remove lower belt guard. See [2.24 LOWER BELT GUARD](#).
7. Remove rear axle nut, axle, spacers and brake with carrier. See [2.6 REAR WHEEL](#).
8. Remove drive belt. See [1.12 DRIVE BELT AND REAR SPROCKET](#).
9. Remove rear wheel. See [2.6 REAR WHEEL](#).
10. Remove lower rear shock fastener. See [2.15 REAR SHOCK ABSORBER](#).
11. See [Figure 2-100](#). Loosen swing arm pinch screw (1).
12. Remove swingarm pivot bolt (6) and swingarm.
13. Remove well nuts from swingarm.
14. Use slide hammer (SNAP-ON Part No. CJ1275 or equivalent) and bearing remover to remove bearings (4).
15. Remove swingarm spacer (5).

## INSTALLATION

1. See [Figure 2-100](#). Install **new** bearings (4) and spacer (5).
2. Position swing arm in mounting block. Apply anti-seize to swingarm bolt (6) and install. Tighten to 24-26 ft-lbs (33-35 Nm).
3. Apply LOCTITE 243 BLUE to pinch screw (1) and install. Tighten to 17-19 ft-lbs (23-26 Nm).
4. Install well nuts.
5. Install rear shock and fastener. Tighten to 35-40 ft-lbs (47-54 Nm).
6. Install rear wheel, axle, brakes, and spacers. Tighten rear axle nut to 48-52 ft-lbs (65-71 Nm).
7. Install drive belt.
8. Install rear fender, lower belt guard, and sprocket cover.
9. Loosely install right side footpegs mount.
10. Install reservoir, master cylinder, and brake pedal. Tighten brake pedal bolt to 72-96 **in-lbs** (8-11 Nm).
11. Tighten footpeg mounting bracket.

### ⚠ WARNING

**Connect positive (+) battery cable first. If positive (+) cable should contact ground with negative (-) cable connected, the resulting sparks can cause a battery explosion, which could result in death or serious injury. (00068a)**

12. Install battery. See [7.16 BATTERY](#).

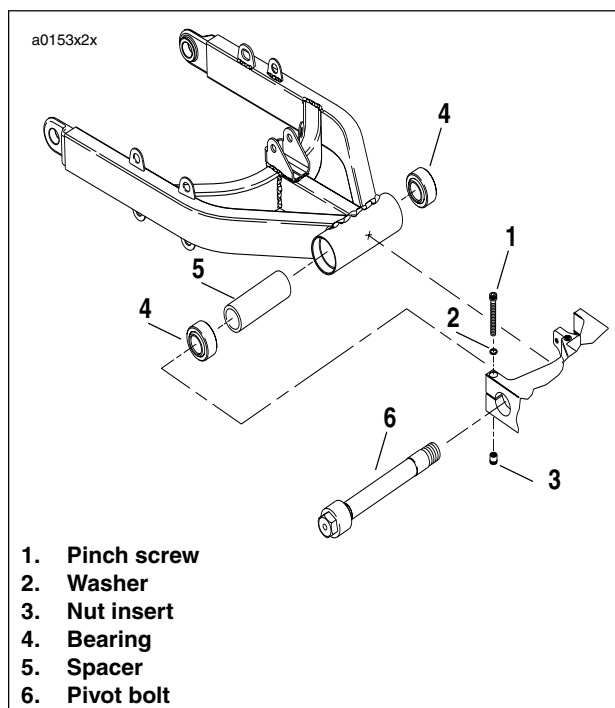
### ⚠ WARNING

**After repairing the brake system, test brakes at low speed. If brakes are not operating properly, testing at high speeds can cause loss of control, which could result in death or serious injury. (00289a)**

### ⚠ WARNING

**After installing seat, pull upward on front of seat to be sure it is in locked position. While riding, a loose seat can shift causing loss of control, which could result in death or serious injury. (00070a)**

13. Install seat. See [2.28 SEAT](#).



**Figure 2-100. Swingarm**

## MUFFLER REMOVAL

### CAUTION

To prevent damage to muffler, secure muffler before removing rear muffler strap.

1. See [Figure 2-101](#). Remove fasteners, washers, spacers and brackets on rear muffler strap.
2. Remove exhaust header fasteners (13).
3. Remove front muffler mounting fastener, nut, and washer (4, 7, 12).
4. Remove exhaust header.
5. Remove retaining ring (2).
6. Remove exhaust header clamp (3).
7. Remove and discard exhaust port gasket (1).

## MUFFLER INSTALLATION

1. See [Figure 2-101](#). Install **new** bushings and spacer into front muffler support hole (8, 17, 11).
2. Install header clamp onto exhaust (3).
3. Install retaining ring oriented 90° from exhaust studs (2).

### NOTE

*Retaining ring may crack if not oriented as stated in step 3.*

4. Install **new** exhaust port gasket (1).
5. Position muffler on motor. Hand tighten nuts (13).
6. Slide muffler over bushings on front mount.
7. Hand thread bolt washer and nut to front muffler support.
8. Install rear muffler strap (15).

### NOTE

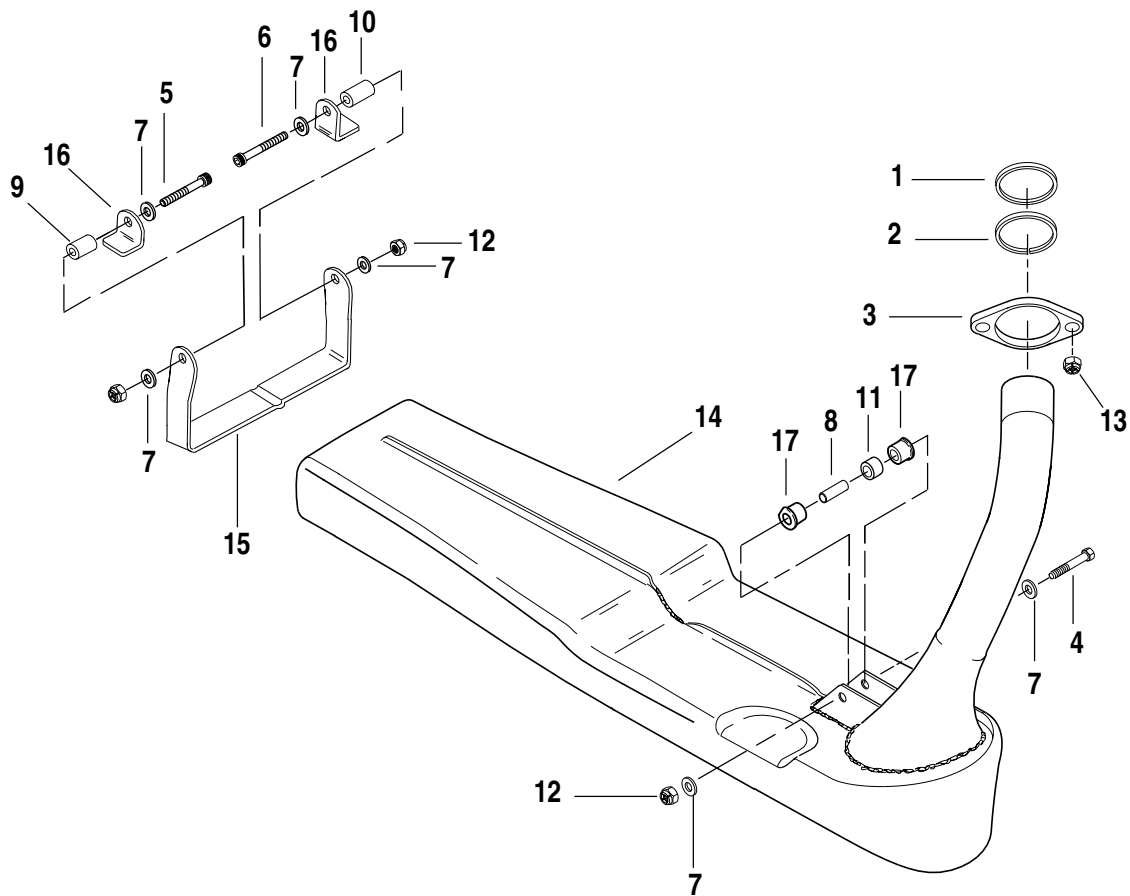
*A rubber mallet may be used to tap the muffler strap into muffler notches.*

9. Install right side muffler spacers (9), brackets (16) and fasteners (5).
10. Install left side muffler spacers, brackets and fasteners.
11. Hand tighten fasteners on rear muffler strap bolts (5,6).
12. Tighten lower, then upper header nuts to 72-96 **in-lbs** (8-11 Nm).
13. Tighten rear strap screws (5, 6) to 22-25 ft-lbs (30-34 Nm).
14. Tighten front muffler bolts (4) to 22-25 ft-lbs (30-34 Nm).

### CAUTION

**Use care when performing service procedures and avoid scratching the frame and/or painted parts. Failure to do so may result in corrosion of parts.**

a0160x2x



- |                            |                         |
|----------------------------|-------------------------|
| 1. Gasket, exhaust port    | 10. Spacer, left        |
| 2. Retaining ring, exhaust | 11. Spacer              |
| 3. Clamp, exhaust ring     | 12. Nut (2)             |
| 4. Bolt                    | 13. Nut (2)             |
| 5. Screw                   | 14. Muffler, complete   |
| 6. Screw                   | 15. Muffler strap, rear |
| 7. Washer (6)              | 16. Bracket (2)         |
| 8. Spacer                  | 17. Grommet (2)         |
| 9. Spacer, right           |                         |

Figure 2-101. Exhaust System Assembly



## REMOVAL

### Footpeg

1. See [Figure 2-102](#). Remove cotter pin (3).
2. Remove clevis pin (4).
3. Remove spacer (7, rear peg only).
4. Remove footpeg.

### Footpeg Support Bracket

1. Remove seat. See [2.28 SEAT](#).
2. See [Figure 2-103](#). On left side remove oil tank drain hose, breather drain hose, clamp and fastener.
3. On right side remove rear master cylinder, spacers, reservoir, and brake pedal.
4. See [Figure 2-102](#). Remove mounting bolts located behind footpeg support bracket.
5. Remove footpeg support bracket.

## INSTALLATION

### Footpeg Support Bracket

1. Align footpeg support mounting bracket and spacer with mounting holes on frame.
2. Install mounting bolts and washers. Tighten fasteners to 25-30 ft-lbs. (34-41 Nm).
3. See [Figure 2-103](#). On left side install clamp with oil tank drain hose and breather hose.
4. On right side install rear master cylinder, spacers, reservoir, and brake pedal. See [2.13 REAR BRAKE MASTER CYLINDER](#).

### WARNING

After installing seat, pull upward on front of seat to be sure it is in locked position. While riding, a loose seat can shift causing loss of control, which could result in death or serious injury. (00070a)

5. Install seat. See [2.28 SEAT](#).

### Footpeg

1. See [Figure 2-102](#). Align footpeg mounting holes with footpeg support bracket mounting holes.
2. Insert dowel pin (and on rear peg, spacer) through mounting holes.
3. Install **new** cotter pin.

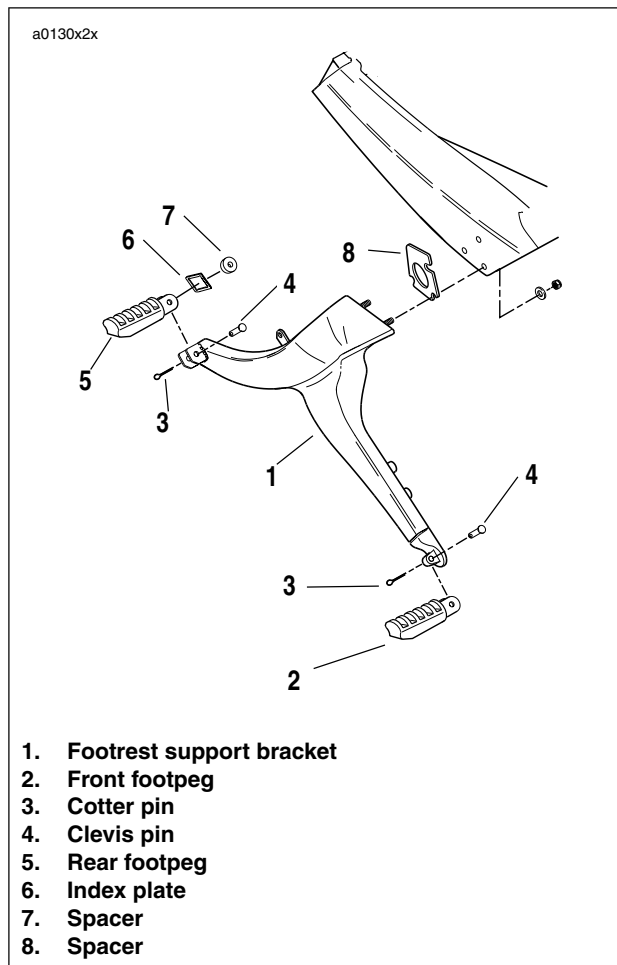


Figure 2-102. Footpeg Support Bracket (Left Side)

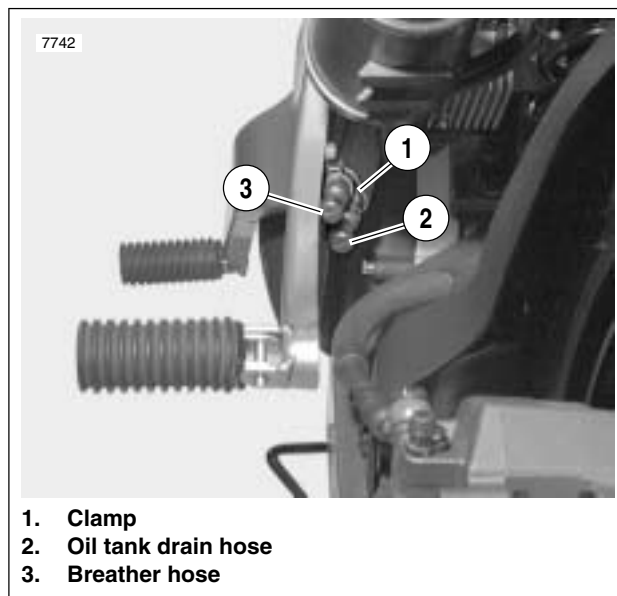


Figure 2-103. Left Side Footpeg Support Bracket

## REMOVAL

1. See [Figure 2-104](#). Remove master cylinder bolts and spacers.
2. Remove rear pedal bolt and move pedal assembly down away from support bracket.
3. See [Figure 2-105](#). Remove the three screws and washers on sprocket cover.
4. Slide cover free.

## INSTALLATION

1. Apply LOCTITE 243 (Blue) to threads of three screws.
2. Position sprocket cover and install three screws and washers. Tighten fasteners to 30-36 **in-lbs** (3-4 Nm).
3. Move pedal assembly in position and install pedal bolt. Tighten pedal bolt to 72-96 **in-lbs** (8-11 Nm).
4. Install master cylinder bolts and spacers. See [2.13 REAR BRAKE MASTER CYLINDER](#).

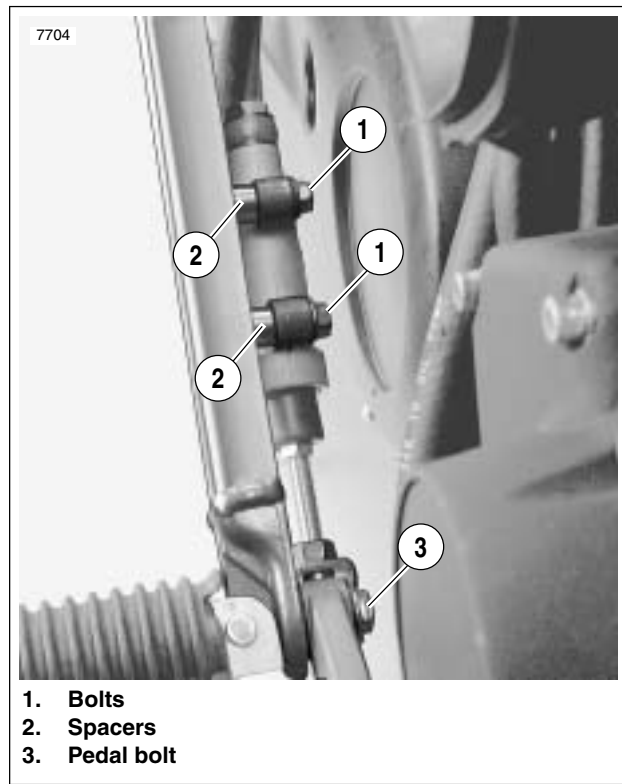


Figure 2-104. Master Cylinder Mounting

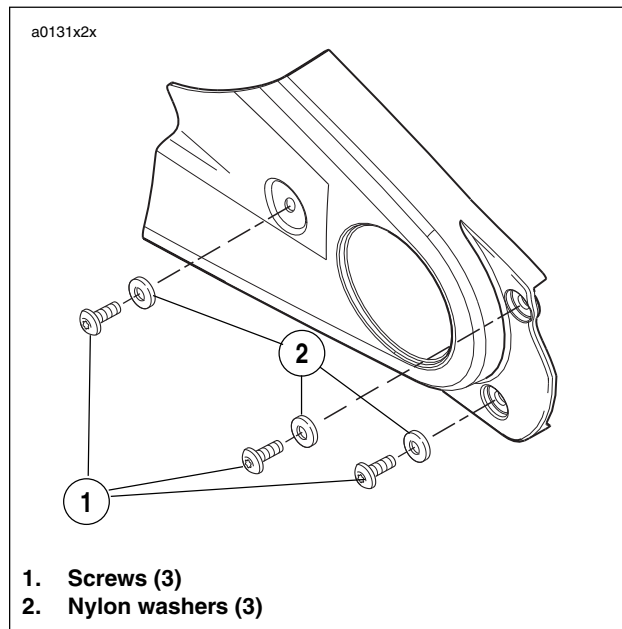
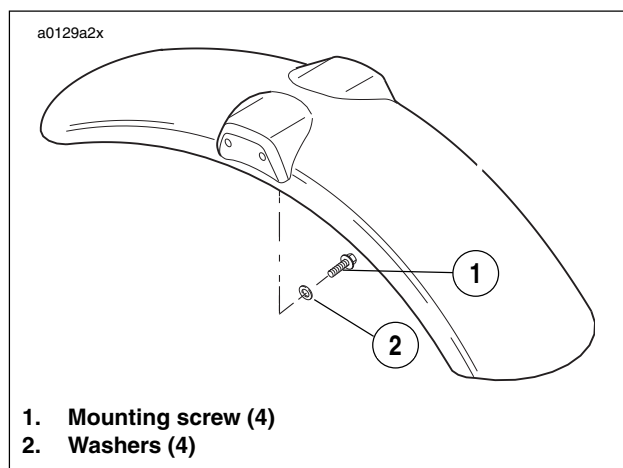


Figure 2-105. Sprocket Cover Fasteners

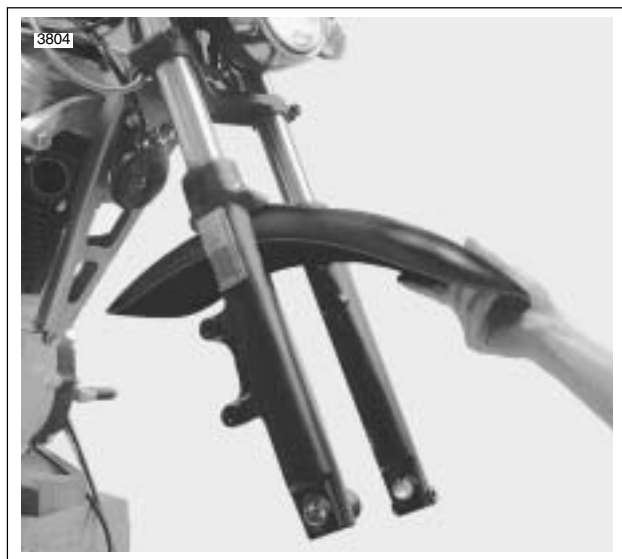
## FRONT FENDER REMOVAL

1. Raise front wheel off ground.
2. Remove front wheel. See [2.5 FRONT WHEEL](#).



**Figure 2-106. Front Fender Assembly Mounting Screws**

3. See [Figure 2-106](#). Remove four lower fender mounting screws.



**Figure 2-107. Removing Front Fender**

4. See [Figure 2-107](#). Remove front fender.

## FRONT FENDER INSTALLATION

1. Raise front wheel off floor.
2. Align front fender mounting holes with front fork bracket.

### NOTE

*The longer end of the fender faces away from the front end.*

3. Apply LOCTITE 243 (Blue) to first few threads of four fender mounting screws.
4. See [Figure 2-106](#). Install front fender with four fender mounting screws.
5. Tighten fender mounting screws to 27-30 in-lbs (3.1-3.4 Nm).

## REAR FENDER REMOVAL

1. Remove seat. See [2.28 SEAT](#).
2. Remove right side footpeg support. See [2.21 FOOTPEGS AND FOOTPEG SUPPORT BRACKETS](#).

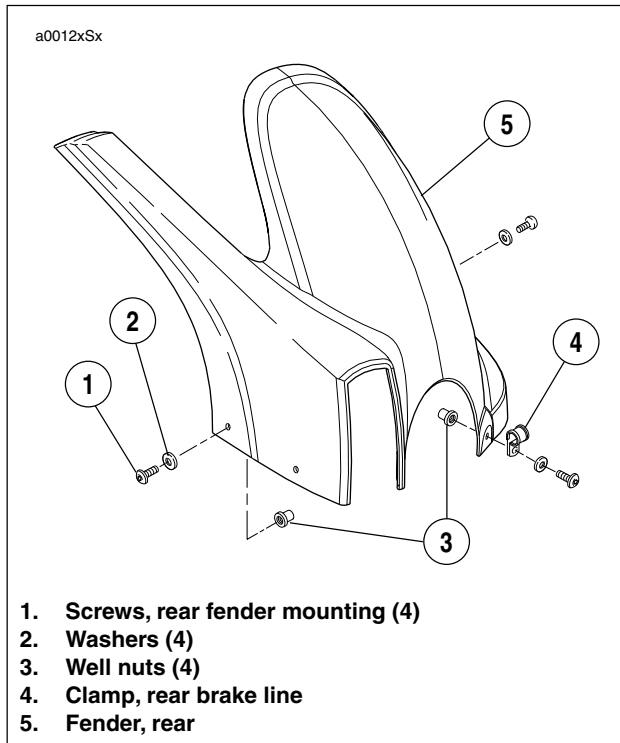


Figure 2-108. Rear Fender Assembly

3. See [Figure 2-108](#). Remove rear fender mounting screws and washers from rear fender.
4. Remove rear fender.

## REAR FENDER INSTALLATION

1. Position rear fender.
2. Install rear fender mounting screws, washers and well-nuts on rear fender.
3. Tighten rear fender mounting screws to 30-36 **in-lbs** (3-4 Nm).
4. Install right side footrest support bracket. See [2.21 FOOTPEGS AND FOOTPEG SUPPORT BRACKETS](#).

### WARNING

After installing seat, pull upward on front of seat to be sure it is in locked position. While riding, a loose seat can shift causing loss of control, which could result in death or serious injury. (00070a)

5. Install seat. See [2.28 SEAT](#).

## REMOVAL

1. See [Figure 2-109](#). Remove two screws and nylon washers securing lower belt guard to swingarm.
2. Remove belt guard.

## INSTALLATION

1. Position belt guard over tabs on swingarm.
2. Secure belt guard with two screws and nylon washers.
3. Tighten screws to 30-36 **in-lbs** (3-4 Nm).

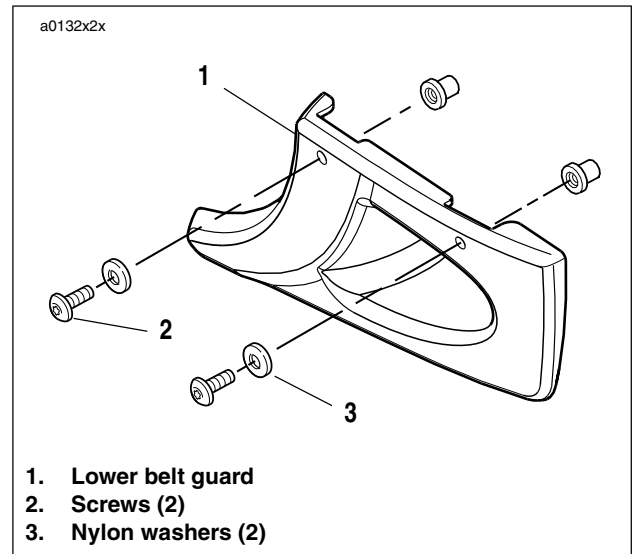


Figure 2-109. Lower Belt Guard

## REMOVAL- TAIL SECTION

1. Remove seat. See [2.28 SEAT](#).
2. See [Figure 2-110](#). Remove fasteners and clamp (3, 19 and 20).
3. Remove tree fasteners (2).
4. Remove fairing, tail section (1).
5. Disconnect battery negative cable.
6. Unplug taillight.
7. Cut cable strap holding taillight and turn signal wires.
8. Unplug turn signals.
9. Remove nut (8) and lock washer (7).
10. Remove turn signals (6).
11. Remove nuts and flat washers from back of taillight.
12. Remove taillight.
13. Remove bolts (4) and nuts (9).
14. Remove license plate bracket (5).

**WARNING**

To prevent accidental vehicle start-up, which could cause death or serious injury, disconnect negative (-) battery cable before proceeding. (00048a)

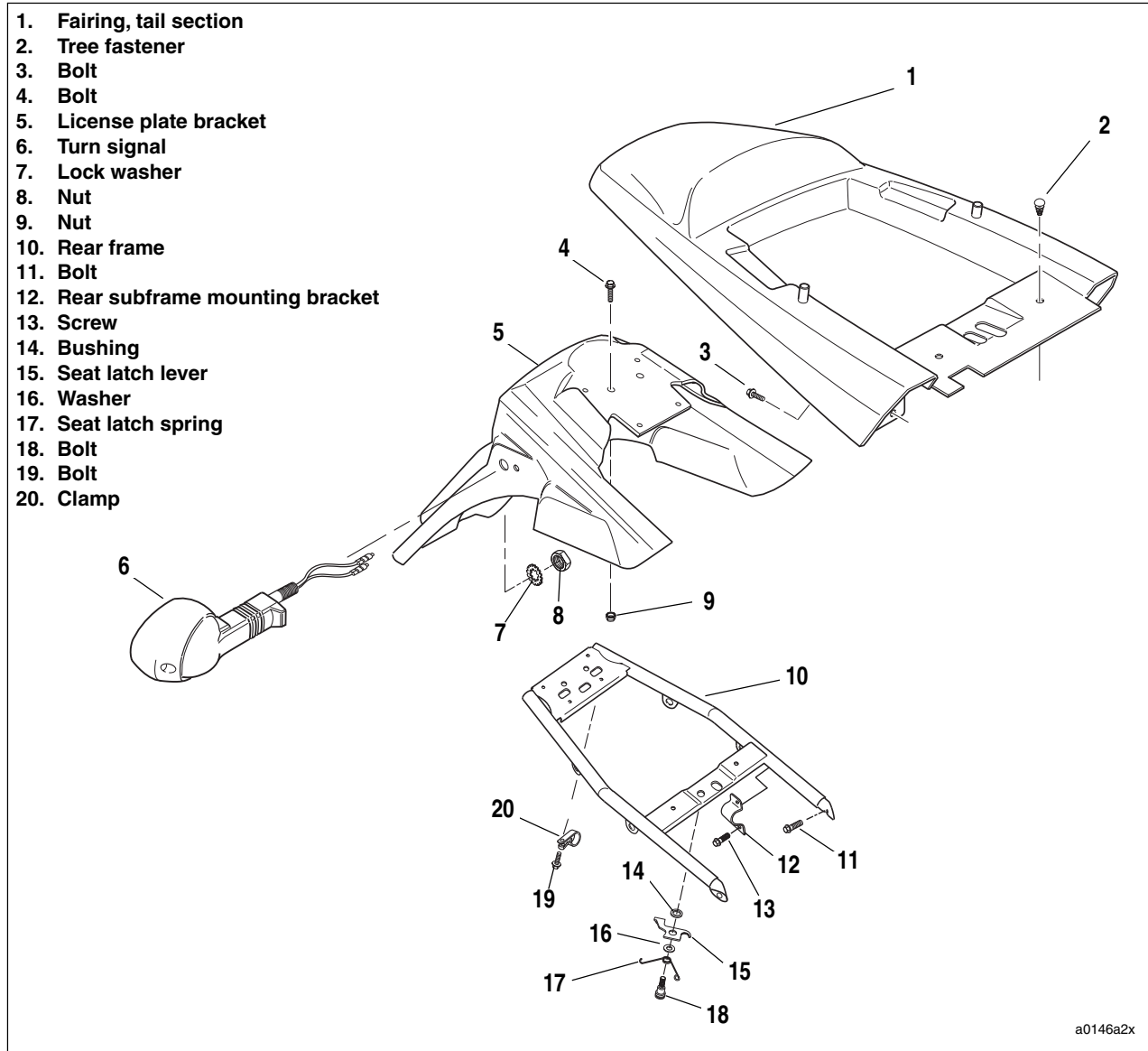


Figure 2-110. Tail Section

## REMOVAL - REAR FRAME ASSEMBLY

---

1. Remove tail section.
2. Disconnect rear wire harness connector [7] (6-place amp), located under seat near fuse block. Detach connector from "T" stud.
3. See [Figure 2-110](#). Remove fasteners (13) and bracket (12).
4. Remove fasteners (11).
5. Slide rear frame assembly (10) out.

## INSTALLATION - REAR FRAME ASSEMBLY

---

1. See [Figure 2-110](#). Slide rear frame assembly (10) into frame.
2. Install fasteners (11).
3. Install brackets (12) and fasteners (13).
4. Connect rear wire harness and mount on "T" stud.

## INSTALLATION - TAIL SECTION

---

1. See [Figure 2-110](#). Install license plate bracket (5) using fasteners (4) and nuts (9) in rear holes.
2. Install taillight using flat washers and nuts.
3. Install turn signals (6) using lock washers (7) and nuts (8).
4. Connect turn signal wires and taillight wires. Cable tie together.
5. Install tail section (1) using fasteners (3, 19, 20).
6. Connect battery negative cable.

### WARNING

**After installing seat, pull upward on front of seat to be sure it is in locked position. While riding, a loose seat can shift causing loss of control, which could result in death or serious injury. (00070a)**

7. Install seat. See [2.28 SEAT](#).

## REMOVAL

1. See [Figure 2-111](#). Remove two screws and nylon washers on each side.



Figure 2-111. Remove Screws

2. Remove windscreen.

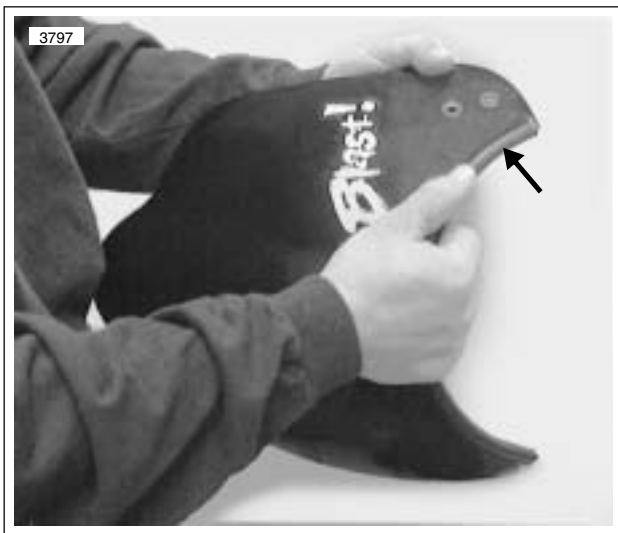


Figure 2-112. Windscreen Trim

3. See [Figure 2-112](#). Remove windscreen trim.
4. Remove windscreen mounting brackets, if required. See [7.17 HEADLAMP](#).

## INSTALLATION

1. If removed, install both windscreen brackets. See [7.17 HEADLAMP](#).
2. Verify trim is installed on windscreen.
3. See [Figure 2-111](#). Install two screws and nylon washers on each side. Tighten screws to 9-11 **in-lbs** (1-1.2 Nm).



## REMOVAL

1. See [Figure 2-113](#). Remove two mounting screws (1) and instrument panel.
2. Remove two screws from back of instrument panel.
3. Remove rubber boot (2) and odometer reset switch (3).
4. Depress tab and remove speedometer connector [39].

### NOTE

To remove speedometer, see [7.25 ELECTRONIC SPEEDOMETER](#).

## INSTALLATION

1. See [Figure 2-113](#). Install odometer reset switch to instrument panel and install rubber boot.
2. Install connector [39] on back of speedometer.
3. Apply LOCTITE 243 (Blue) to threads of mounting screws. Install dash with two mounting screws. Tighten screws to 30-36 **in-lbs** (3-4 Nm).

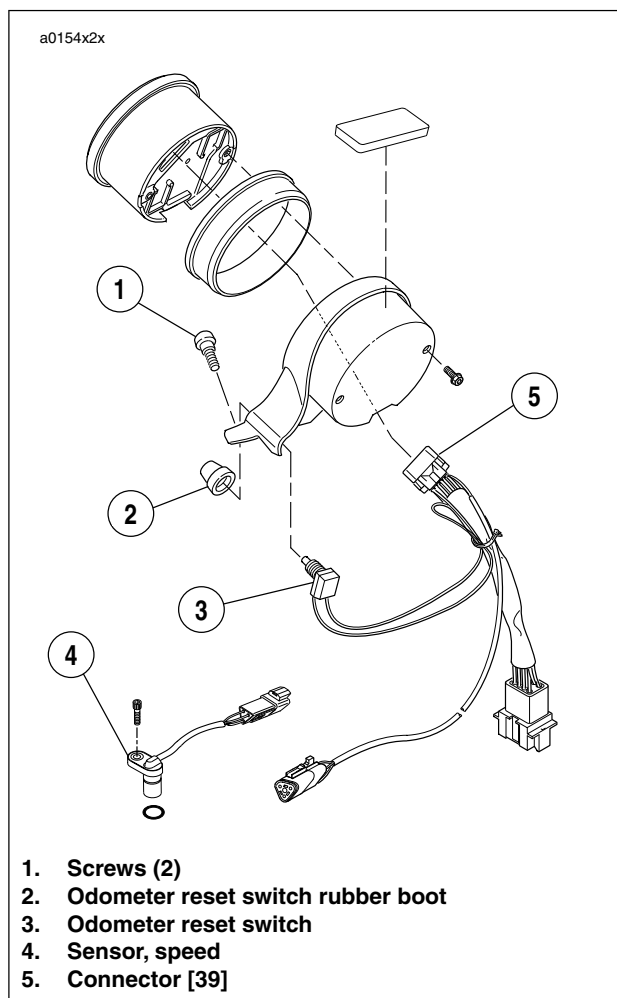


Figure 2-113. Instrument Panel

## REMOVAL

**CAUTION**

Use both hands to release tension on the seat latch to avoid pinching fingers.

You will need to use both hands during this operation to release tension on the seat latch (located beneath the seat).

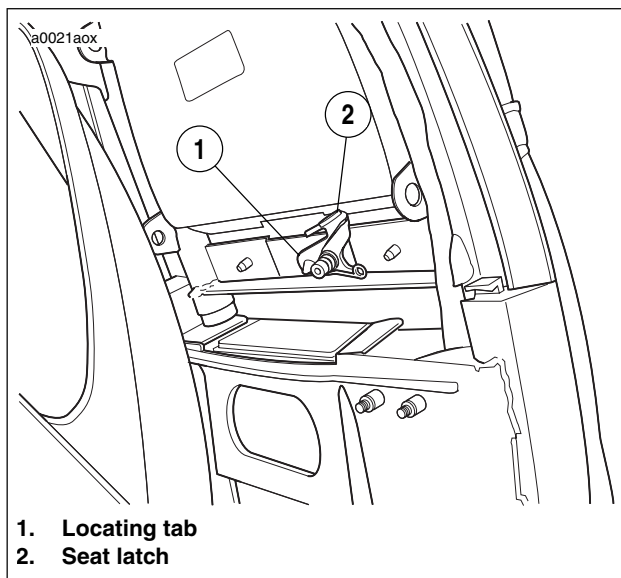


Figure 2-114. Seat Latch

1. See Figure 2-114. Push or pull the seat latch toward the front of the motorcycle with your thumb.
2. Grasp the rear section of the seat with one hand.
3. Lift seat away from motorcycle to loosen from frame.

## INSTALLATION

1. See Figure 2-115. Locate tab on bottom of seat.

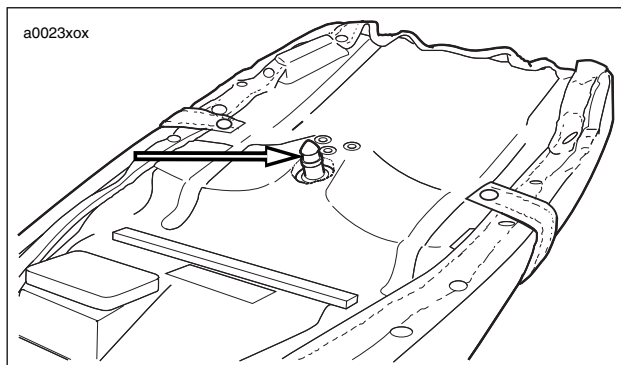


Figure 2-115. Underside View of Seat with Locating Tab

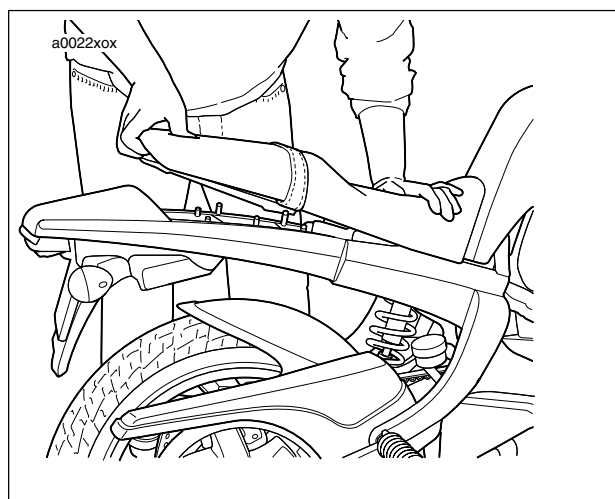


Figure 2-116. Seat Installation

2. See Figure 2-116. Ensure seat is upright. Grasp the rear section of the seat with one hand and grasp the front section of the seat with the other hand.

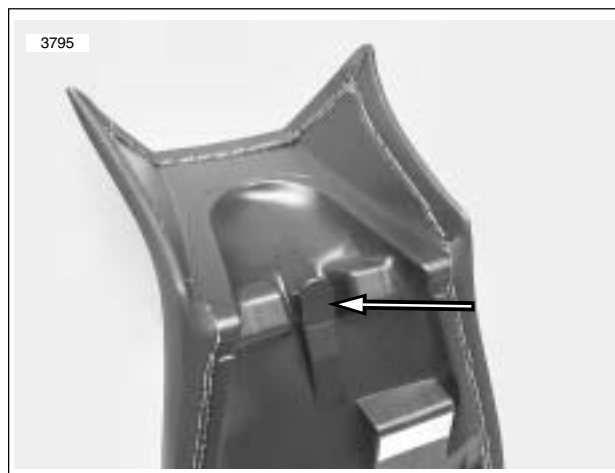


Figure 2-117. Locking Seat Tongue

3. See Figure 2-117. Push seat forward while flexing the rear section of the seat upward until the tongue locks into the bracket located on the frame.
4. Push down firmly on the seat

**NOTE**

You will hear a click when the locating tab and seat latch, lock together correctly.

**WARNING**

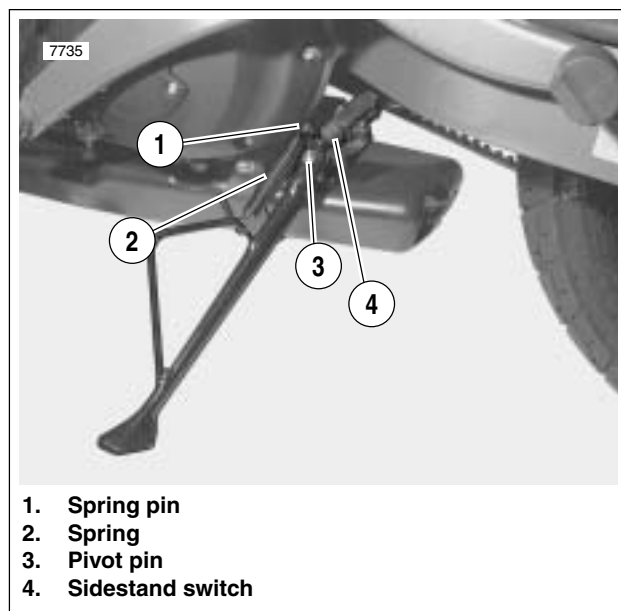
After installing seat, pull upward on front of seat to be sure it is in locked position. While riding, a loose seat can shift causing loss of control, which could result in death or serious injury. (00070a)

5. Verify seat is locked in position.

## GENERAL

**⚠ WARNING**

This motorcycle does **NOT** have a locking sidestand. Park the motorcycle on a level, firm surface. An unbalanced motorcycle can fall, which could result in death or serious injury. (00122a)



**Figure 2-118. Sidestand**

See [Figure 2-118](#). The sidestand is located on the left side of the motorcycle. The sidestand swings outward to support the motorcycle for parking.

Test the sidestand in the following manner. Without vehicle weight resting on it, sidestand should move freely into extended (down) and retracted (up) positions.

The sidestand activates the sidestand switch (4) which is part of the starter interlock system.

## INSPECTION

1. Test the sidestand with the vehicle upright and level. The sidestand should move freely into extended down and up position.
2. Check sidestand switch operation after first 1000 miles (1600 km) and every 2500 miles (4000 km).

## DISASSEMBLY/REMOVAL

1. Raise rear wheel off floor using REAR WHEEL SUPPORT STAND (Part No. B-41174).
2. Disconnect electrical connection.
3. Cut cable strap from rear brake line.
4. Remove spring (2) from sidestand.
5. Remove cotter pin and pivot pin (1).
6. Remove sidestand from frame.

## ASSEMBLY/INSTALLATION

1. See [Figure 2-118](#). Apply LITHIUM GREASE to pivot pin.

**NOTE**

*Do not crush sidestand switch during installation.*

2. Install sidestand using pivot pin and cotter pin.
3. Connect spring to sidestand and spring pin.
4. Remove REAR WHEEL SUPPORT STAND (Part No. B-41174).
5. Inspect sidestand and sidestand switch for proper operation.

## REMOVAL

1. See [Figure 2-119](#). Remove left side switch housing (13).
2. Loosen clutch adjuster and remove clutch cable (8).
3. Unplug clutch lever switch (9).
4. Remove left handlebar grip (12).
5. Loosen clutch lever screw (4) and slide clutch lever and bracket assembly off of handlebar (3).
6. Disconnect front brake lever switch (16).
7. Slide rubber boot off the throttle cable adjusters. Loosen cable adjuster lock on each adjuster.
8. Turn adjusters in direction which will shorten cable housings to minimum length providing freeplay in both cables.
9. Remove two screws on right switch assembly. Separate housings (14) from handlebar.
10. Remove cables from notches in housings.
11. Unhook ferrules from cable wheel.
12. Remove throttle grip (15).
13. Remove front master cylinder clamp bolts.
14. Remove master cylinder.
15. Remove upper handlebar clamp screws (1) and upper handlebar clamps (2).
16. Remove handlebar (3).

## INSTALLATION

1. Position handlebar (3) on upper triple clamp.
2. Install upper handlebar clamps (2) and screws (1).
3. Tighten screws in steps maintaining even gap between upper triple clamp and upper handlebar clamps. Final tighten to 120-144 **in-lbs** (14-16 Nm).
4. Install master cylinder. Tighten master cylinder clamp bolts to 80-120 **in-lbs**. (9-14 Nm).
5. Install throttle grip.
6. Hook ferrules to cable wheel. Position cables in notches of switch housing (14).
7. Position housings on right handlebar. Front housing has locating pin that must align with hole in handlebar. Install fasteners, longer screw on bottom. Tighten fasteners to 25-33 **in-lbs** (3-4 Nm).
8. Plug in front brake lever switch (16).
9. Adjust throttle cables. See [1.19 THROTTLE CABLES](#).
10. Install clutch lever and bracket assembly. Tighten clutch lever screw (4) to 50-60 **in-lbs** (6-7 Nm).
11. Install hand grip (12).
12. Install clutch cable (8).
13. Adjust clutch. See [1.10 CLUTCH](#).
14. Plug terminal into clutch lever switch (9).
15. Install left side switch housing (13). Front housing has locating pin that must align with hole in handlebar. Tighten fasteners to 25-33 **in-lbs** (3-4 Nm).

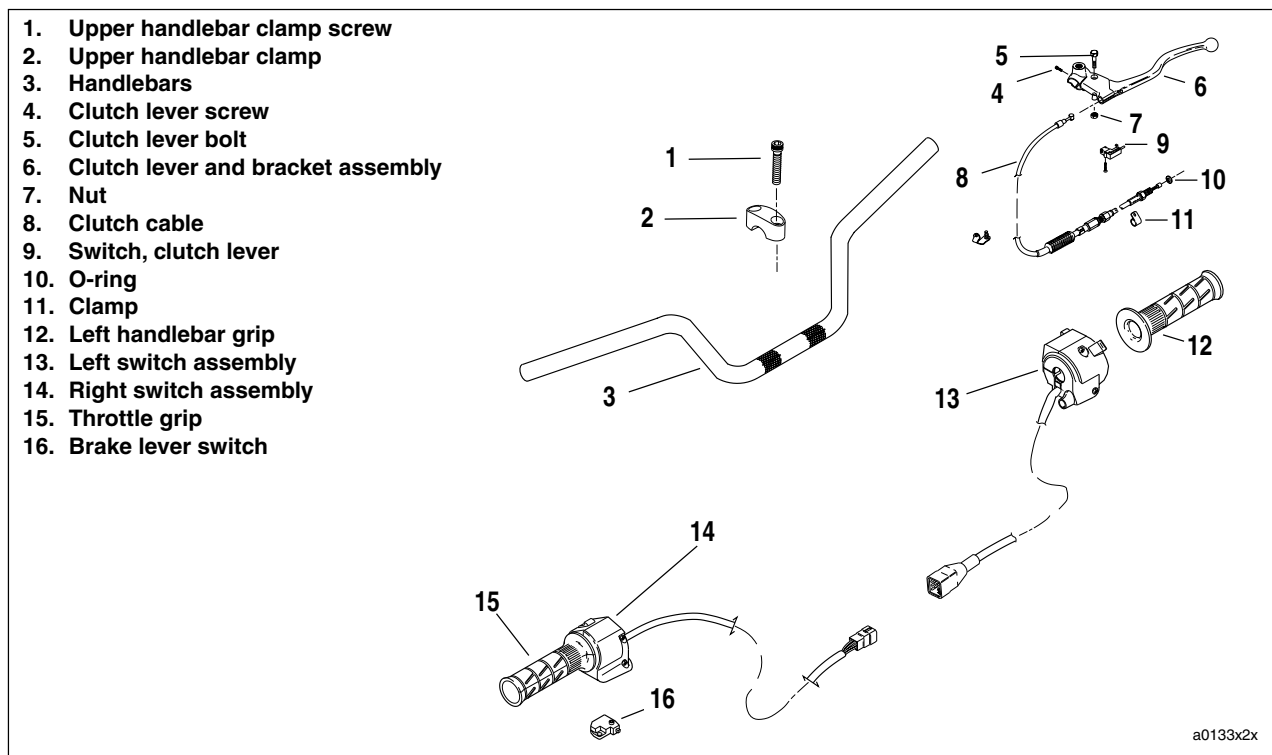


Figure 2-119. Handlebar Assembly

## FRONT ISOLATOR

### Removal

1. Remove seat. See [2.28 SEAT](#).
2. Remove fuel tank. See [4.2 FUEL TANK COVER/FUEL TANK](#).
3. Raise motorcycle until front suspension is unloaded.
4. Remove muffler, and support motor with jack. When isolator is detached, powertrain may move. See [2.20 EXHAUST SYSTEM](#).
5. Cut horn cable strap.
6. Remove clutch cable tie.
7. See [Figure 2-120](#). Loosen front ground strap bolt for clearance.
8. See [Figure 2-121](#). Remove two outboard isolator bolts (1).
9. Remove main isolator bolt and nut (2). Discard nut.
10. Remove isolator.

### Installation

1. See [Figure 2-121](#). Position **new** isolator in frame.
2. Install two outboard isolator bolts (1). Tighten 30-33 ft-lbs (41-45 Nm).
3. Install main isolator bolt and **new** nut (2). Tighten main isolator bolt to 63-70 ft-lbs (85-95 Nm).
4. Tighten front ground strap bolt to 30-33 ft-lbs (41-45 Nm).
5. Install clutch cable to clip.
6. Install horn cable strap.
7. Install fuel tank. See [4.2 FUEL TANK COVER/FUEL TANK](#).

### ⚠ WARNING

After installing seat, pull upward on front of seat to be sure it is in locked position. While riding, a loose seat can shift causing loss of control, which could result in death or serious injury. (00070a)

8. Install seat. See [2.28 SEAT](#).

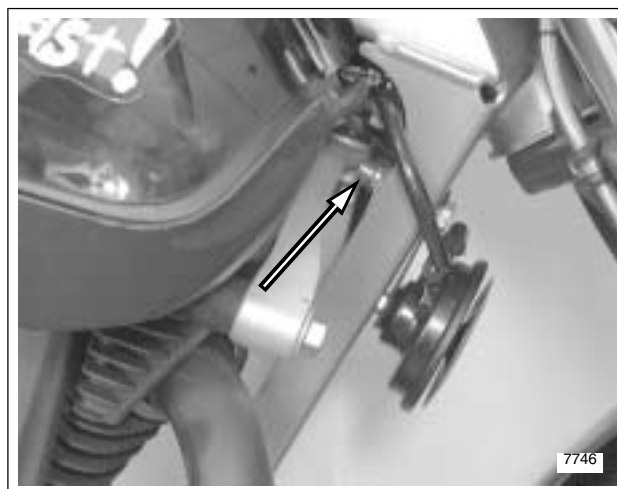
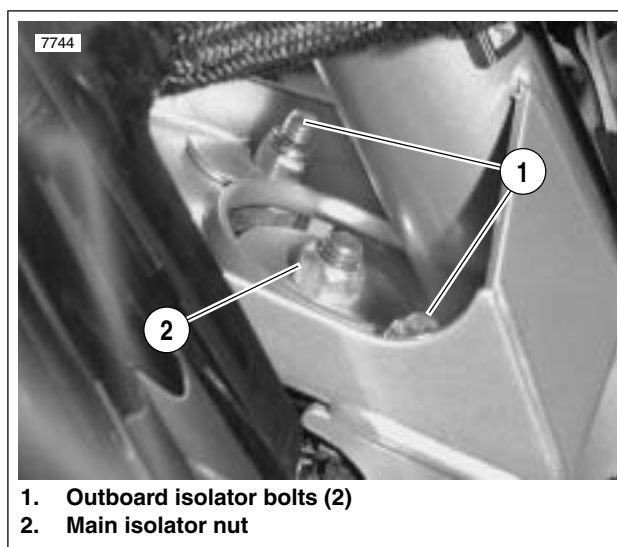


Figure 2-120. Front Ground Strap Bolt



1. Outboard isolator bolts (2)
2. Main isolator nut

Figure 2-121. Front Isolator Bolts

## REAR ISOLATOR

### Removal

1. Remove seat. See [2.28 SEAT](#).

#### ⚠ WARNING

Disconnect negative (-) battery cable first. If positive (+) cable should contact ground with negative (-) cable connected, the resulting sparks can cause a battery explosion, which could result in death or serious injury. (00049a)

2. Remove battery. See [7.16 BATTERY](#).
3. Support rear of motorcycle.
4. Remove rear shock. See [2.15 REAR SHOCK ABSORBER](#).
5. Remove muffler and support motor with jack. When isolator is detached powertrain may move. See [2.20 EXHAUST SYSTEM](#)
6. See [Figure 2-122](#). Remove two allen bolts connecting frame to isolator.
7. See [Figure 2-123](#). Remove four bolts (2) connecting isolator (1) to engine.

#### NOTE

*It may be necessary to raise or lower motorcycle to remove isolator.*

### Installation

1. See [Figure 2-123](#). Clean engine bolt holes and bolts. Do not re-tap holes.
2. Apply LOCTITE 243 (Blue) to bolts and install four isolator-to-engine bolts. Tighten bolts to 23-27 ft-lbs (31.2-36.6 Nm).
3. See [Figure 2-122](#). Apply LOCTITE 272 (Red) to the two frame-to-isolator bolts. Tighten bolts to 30-33 ft-lbs (41-45 Nm).
4. Install rear shock absorber. See [2.15 REAR SHOCK ABSORBER](#).

#### ⚠ WARNING

Connect positive (+) battery cable first. If positive (+) cable should contact ground with negative (-) cable connected, the resulting sparks can cause a battery explosion, which could result in death or serious injury. (00068a)

5. Install battery. See [7.16 BATTERY](#).

#### ⚠ WARNING

After installing seat, pull upward on front of seat to be sure it is in locked position. While riding, a loose seat can shift causing loss of control, which could result in death or serious injury. (00070a)

6. Install seat. See [2.28 SEAT](#).

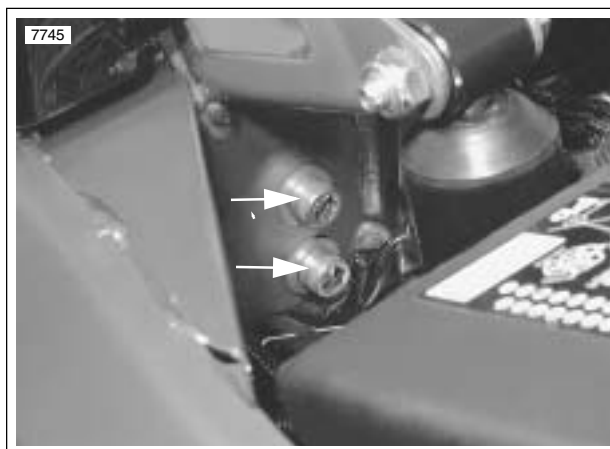


Figure 2-122. Frame-to-Isolator Bolts

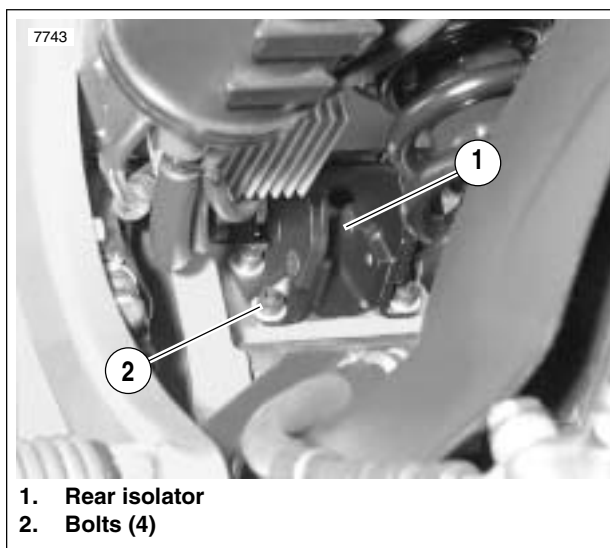


Figure 2-123. Rear Engine Mount Isolator